



Rose Petals



Short Rose-Related Info-Bits to Stay Connected

April 15, 2024 Edition

Grandiflora Spotlight: *Miss Manners*

By Cathy Matsuzaki

Editor's Note: Our recent HRS Member's-Only sale at R&S Nii Nursery was very fruitful as we were able to purchase several new rose varieties. Here's another promising newly-introduced variety, **Miss Manners**, purchased by Master Rosarian, Myrna Cariaga.

Miss Manners is a gorgeous brilliant pink Grandiflora rose bred by Tom Carruth prior to 2023 and newly-introduced to the market in 2024 by Weeks Roses. Its well-formed buds blossom into vibrant deep pink old-fashioned English-style roses with a moderate fruity fragrance.



Photo by Myrna Cariaga

packed with 45 to 60 petals. Typical of a Grandiflora rose variety, **Miss Manners** can be borne either singly or in clusters. These

Each 3 to 4-inch lovely bloom is

Continued on Page 2

Floribunda Spotlight: *Day Breaker*



Photo by Myrna Cariaga

By Cathy Matsuzaki

After highlighting several newly-introduced rose varieties, we take a step back in time and feature the beautiful **Day Breaker** rose. With its exquisite exhibition-style and stunning coloration, it's no wonder why this rose was awarded top honors at the Portland Rose Trials; Rose Hills International Rose Trials; and Australian National Rose Trials.

The photo of this rose was taken by Myrna Cariaga several years ago when visiting the University of Hawaii's Maui Agriculture Research Center in Kula, Maui. It's interesting to note that Myrna says while she also grew the **Day Breaker** rose in her own garden in Aiea on Oahu, she never saw the rose bloom as big as she did in that Kula rose garden. Probably due to the cool weather in upcountry Maui.

With its warm yellow undertones blending into brilliant hues of apricot and pink, the **Day Breaker** rose can create a picturesque image similar to the breaking of dawn. This beautiful Floribunda rose was bred by Gareth Fryer in the United Kingdom prior to 2003. It was introduced by Edmunds' Roses in the United States in 2004 as **Day Breaker**.

Continued on Page 2

HRS Announcement & Reminders

2024 Rose School

We have a few more open seats remaining for this year's HRS Rose School so sign up today if you're interested!

WS #1 Sat., April 27, 9:30am-12noon Intro & Planting Roses;

WS #2 Sat., May 25, 9:30am-12noon Fertilizing Roses;

WS #3 Sat., June 22, 9:30am-12noon Pruning Roses; and

WS #4 Sat., July 20, 9:30am-12:30pm Pests & Diseases.

The attendance fees are: HRS Members \$45; Non-Members \$60. All supplies including a mini rose plant; soil amendments; sample fertilizer packets; and light refreshments will be provided to all attendees. Sign up via our HRS website: <http://www.honolulurosesociety.org/2024-rose-school.html>

Fall Rose Show at Pearlridge Mall

After many years, we are excited to announce a return to Pearlridge Shopping Center for our Fall Rose Show. Please save the date: **Saturday, October 26th, 10am-2pm with setup starting at 7am.** More details to follow in the coming months.

World Federation of Rose Societies Convention May 2025 (Click for More Information)



第20回
世界バラ会議
福山大会
2025

WFRS 20th
WORLD ROSE CONVENTION
2025 in FUKUYAMA

Continued from Page 1

attractive blossoms are beautifully highlighted set against its dark green foliage which has excellent disease resistance.

Miss Manners is hardy and can grow to heights of 4 to 5 feet making it ideal to be planted as a border while giving your garden a spectacular splash of color. It flourishes best when planted in full sun to partial shade. This elegant rose is known to have good color retention and makes an ideal cut rose to enjoy indoors.

Myrna says, so far, **Miss Manners** seems to be a very easy-to-grow rose. It is very disease-resistant and is quite floriferous. The blooms are quite large and they tend to bend over when their petals are weighed down with raindrops. This



Photo by Myrna Cariaga

rose also has a moderate sweet aroma which is prevalent in the morning sun.

Sources:

<https://www.regannursery.com/rose/Rosa-Grandiflora-New-2024-Miss-Manners>

<https://www.gurneys.com/product/miss-manners-grandiflora-roses>

Floribunda Spotlight: *Day Breaker*



Photo by Myrna Cariaga

A vigorous medium bushy plant, **Day Breaker** will surely enliven any garden with its vivid coloration planted as a border, in beds or containers.

The glossy dark green foliage serves as a perfect backdrop for these lovely roses. Generally speaking, it has good disease-resistance, but it can be susceptible to Black Spot. **Day Breaker** flourishes best in full sun and at maturity it can grow to heights of 3 to 5 feet with a 3 foot width.

Sources:

<https://www.helpmefind.com/rose/1.php?l=2.36726.0>

<https://www.edmundsroses.com/product/E24365>

Continued from Page 1

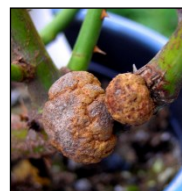
The pointed and shapely yellow buds gracefully unfurl into 4-inch medium-full blooms with a 26 to 40 petal count. A timeless beauty, **Day Breaker** is a good continuous bloomer with small clusters of classically formed spiral-shaped rose blooms.

Day Breaker makes an excellent cut flower to bring indoors to enjoy its mild to strong tea fragrance.

Crown Gall

By Marsha Yokomichi
HRS Master Rosarian

This article originally appeared in the April 2020 edition of Rose Petals.



Grown Gall is caused by a soil-borne bacteria and is characterized by the appearance of callous-like outgrowths that appear on the crown, main stem, or roots of roses - often just below the soil line. Young galls are light green and soft, while mature galls are dark brown or black and become hard and woody.

As the size of the gall increases, the plant's ability to obtain water and nutrients from its root system decreases. Infected roses may appear stunted and lack vigor while other plants will display poor foliage and flower-quality. What's worse is that the gall will eventually begin to decay and release its toxic bacteria into the surrounding soil.

The **Crown Gall** bacteria enters the plant through open wounds. The disease is spread by coming in to contact with the infected plant or surrounding infected soil via items such as cultivation equipment, shoes, water, chewing insects, etc. Once an infected plant is removed from the soil, the pathogens diminish quickly. It can, however, survive at low levels for a minimum of two years or even longer on decaying infected tissues.

Since there is no effective chemical control for **Grown Gall**, prevention and sanitation are crucial for managing it. 1). Cut off and discard (avoid composting) any infected stems as soon as they are detected; Galls appearing on roots or main stems are not salvageable and should be discarded; and 2). Clean and disinfect tools and cultivation equipment with a 10% bleach solution or 90%+ Isopropyl Alcohol to avoid spreading the disease to your other rose plants.



Armchair Traveler: Maui Agricultural Research Center Rose Garden

By Marsha Yokomichi
HRS Master Rosarian

The University of Hawaii's Maui Agricultural Research Center (MARC) is located in Kula, Maui. This garden, part of the University of Hawaii's College of Tropical Agriculture and Human Resources, sits at an elevation of approximately 1,400 feet and is about seven acres in size. The beautiful photo of the **Day Breaker** rose featured on the first page of this newsletter was taken at the **MARC Rose Garden**.

The **MARC Rose Garden**, along with all the gardens on the premises, is not normally open to the public. However, we had a chance to visit with permission during our Honolulu Rose Society 40th Anniversary trip back in May 2015.



Memorial Day

Myrna also served as an American Rose Society official reviewer for the **MARC Rose Garden** for several years.

The **MARC Rose Garden** is simply a plot of land with approximately 20 rectangular beds of roses featuring about 10-12 roses of each variety in each bed. The **MARC Rose Garden** was previously an All-America Rose Selection (AARS) Test Garden which displayed many of the AARS award winners. The cool climate of Kula did wonders for the roses growing there. Many varieties that we were



familiar with from our own Oahu gardens seemed much larger in size there when compared to the same varieties growing in our backyards.



Rainbow Sorbet



Easy Does It

The **MARC Rose Garden** previously served as an All-America Rose Selection (AARS) rose trials test rose garden until 2015 with the demise of the AARS. Today, the garden serves as an American Garden Rose Selection (AGRS) trial garden. The AGRS is the rose testing system that took over where the AARS left off. In this evaluation system, roses are evaluated three times per growing season for two years and the best are given the designation of AGRS winning rose variety.

The **MARC Rose Garden** is located at 424 Mauna Place, Kula, HI 96790. Free admission but you must ask for permission before you plan your trip there. Visitors at the gate will not be allowed in without making pre-arrangements.

Please contact phone (808) 878-1213 or kula@ctahr.hawaii.edu to ask for permission to visit if you'll be in the area. Please identify yourself as a Honolulu Rose Society member.

All photos by Myrna Cariaga



Wild Blue Yonder

The HRS Rose Petals newsletter is published on a monthly basis. If you would like to submit an article and/or photos, please email to:

myokomichi@hawaii.rr.com for possible inclusion in a future edition.

HRS Rose Petals Newsletter
Marsha Yokomichi, Editor